

# Hraunaveita - diversion

**Description:** Excavate for and construct dams in the rivers Kelduá, Grjótá and Innri-Sauðá with associated bottom outlet and spillway, concrete a threshold at Sauðárvatn and excavate diversion channels from Sauðárvatn and Innri-Sauðá. Probing and reinforcing Kelduár- and Grjótár tunnels, linked inlets and sluices at Kelduár tunnel and excavation of joining channels.

**Key quantities:**

Innri-Sauðárstífla - dam	16.000 m <sup>3</sup>
Grjótárstífla - dam	15.000 m <sup>3</sup>
Kelduárstífla - dam	750.000 m <sup>3</sup>
Sauðárvatnsskurður - channel	1.400 m
Innri-Sauðárskurður - channel	650 m
Grjótárgöng - tunnel	1.7 km
Kelduárgöng – tunnel	1.9 km

**Client:**

Landsvirkjun

**Period:**

May 2008 – Sept 2009

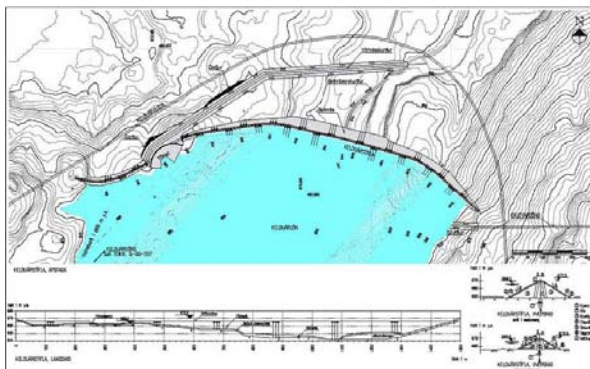
**Architects:**

**Design:**

Almenna verkfræðistofan, Hönnun, Rafhönnun

**Ístak's work:**

Main contractor



**Address:**

ÍSTAK Ltd.  
Engjateigur 7  
105, Reykjavík, Iceland

Phone: +354 530 2700

Fax: +354 530 27 24

E-mail: [istak@istak.is](mailto:istak@istak.is)

Web site: [www.istak.is](http://www.istak.is)